



Housing LIN

# Housing and Ageing: Where are we in England?

Ian Copeman Housing LIN  
Paula Broadbent Keepmoat  
Paul Smith Foundations





# Who are we talking about?



83% of all ages  
want age-neutral  
products, services  
and environments.

The Age of No Retirement — In-Common Research 2016



83% of all ages want to  
mix with people of  
different ages and  
generations.

The Age of No Retirement — In-Common Research 2016

# What housing choices are currently available?



*“one in four persons aged over 60 would be interested in buying a retirement property, equating to 3.5 million people nationally”*

# What do older people want from their home?

**Affordable**  
**Delightful**  
**Active**  
**Social**  
**Spacious**  
**Enabling**  
**Future-proof**  
**Delightful**

Care-ready  
Logical  
Gardens  
Uplifting  
Care Support  
Technology  
Mixed-tenure  
Well-maintained  
Company  
Community



**Paula**

**Paul**

# Retirement housing diversity

- Retirement village models
- Private and social sector developers
- Mixed tenure extra care housing



# Care ready housing

## ‘Care ready’ housing:

High quality housing better suited to support ageing in place and facilitate care if needed





- **Doing it for ourselves/co-design.** A growing interest in: resident-led, self-care, mutual ownership, co-housing, age-friendly communities



# Addressing the strategic challenge

## UK Parliament Select Committee on Housing for Older People

## Local authorities: Getting our homes and communities right



House of Commons  
Communities and Local  
Government Committee

### Housing for older people

Second Report of Session 2017–19

*Report, together with formal minutes  
relating to the report*

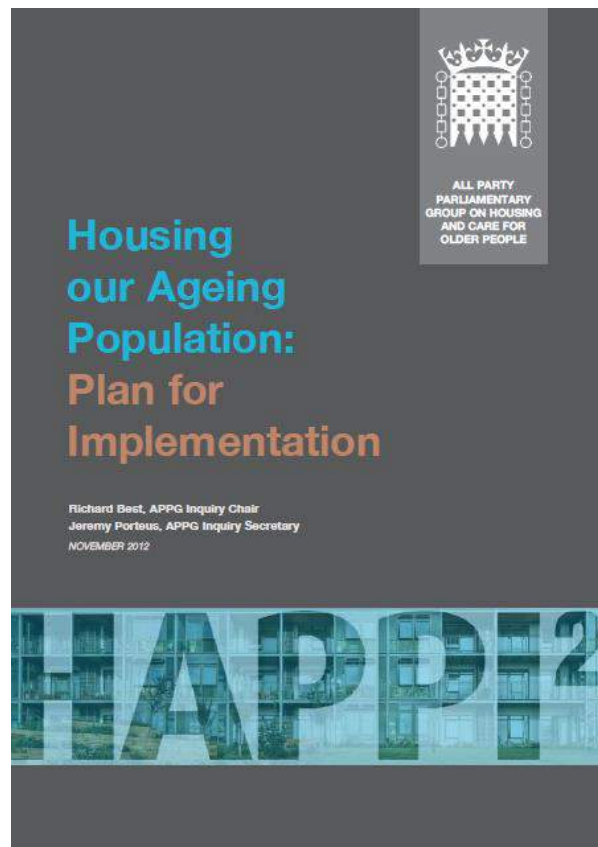
*Ordered by the House of Commons  
to be printed 5 February 2018*





## Housing our Ageing Population: Panel for Innovation

*“Housing for older people should become an exemplar for mainstream housing, and meet higher design standards for space and quality.”*



# About the Housing LIN

- Previously responsible for managing the DH's £227m Extra Care Housing Fund and £80m Telecare in England grant
- 40,000 members across housing, health and social services to help improve partnership working and integration on housing and care
- Essential online resources on housing with care for older people to support commissioners, funders and providers in market development, innovation and investment
- Publish papers to brief on latest innovative policy, research and practice developments in housing, care and support for older people
- 10 regional 'learning labs' in England and Wales supporting local information exchange, peer-to-peer shared learning and improvement activities





Housing LIN

*Connecting people, ideas and resources*

# Thank you



Housing LIN

C/o EAC  
3rd Floor, 89 Albert Embankment  
London  
SE1 7TP

email: [info@housinglin.org.uk](mailto:info@housinglin.org.uk)  
tel: 020 7820 8077  
website: [www.housinglin.org.uk](http://www.housinglin.org.uk)  
Twitter: @HousingLIN